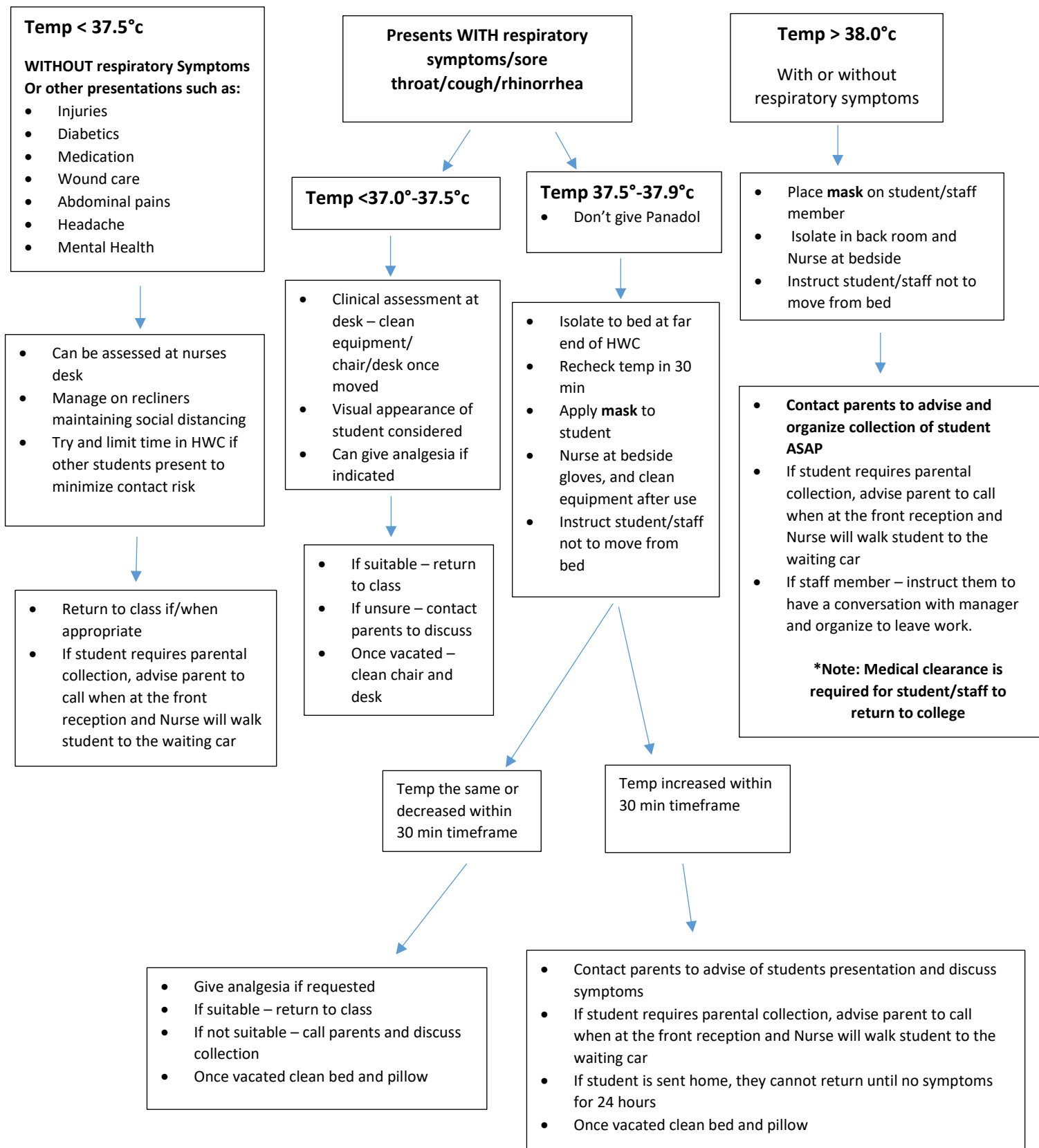


# Health and Wellness Infection Control Flow Chart

## Arriving to HWC

Students and staff attending HWC for assessment are to have a temperature check upon arrival



## Health and Wellness Procedure for return of students Term 2 week 5

### **HWC processes**

#### **Process for cleaning;**

- Isolation room bed/recliner/chair post every patient and change pillows
- Beds at end of room post patient and change pillowcases
- Cleaning of recliners as needed post symptomatic patient and at the end of the day
- Cleaning of plastic chairs at nurses desk as needed post symptomatic patient and at the end of the day
- Chairs outside HWC if students have been waiting on them, as needed and at the end of the day

The HWC nursing staff retain the right to apply flexibility to the above guidelines and flow chart moving in line with the outcomes of new cases of COVID-19 in QLD advised by the QLD government.

- If cases of COVID-19 remain low the tolerance for students/staff with respiratory symptoms could potentially loosen slightly
- If cases of COVID-19 increase then guidelines will be strictly applied when assessing patients who are symptomatic

#### **Students that are required to enter the HWC for reasons unrelated to illness such as:**

- Students requiring medication administration
  - Depending on occupancy levels (once school re-commences) in HWC at the time – May use alternate door.
  - These students should maintain social distancing 1.5m while in HWC.
  - Should enter and exit as efficiently as possible.
  - Should not sit or linger within the HWC.
  - Should be seen as a priority so that they can minimize the amount of time within HWC.
- Students who are Diabetic
  - Depending on occupancy levels (once school re-commences) in HWC at the time – May use alternate door.
  - These students should maintain social distancing 1.5m while in HWC
  - Should enter and exit as efficiently as possible.
  - Use the “clean” desk area above the diabetic draw (next to printer) to do their manual BGL checks/insulin administration/treatments that are required, instead of doing it on the nursing desk
  - Should not sit or linger within the HWC
  - Diabetic patients who are experiencing a LOW or a HIGH could isolate in recliner chair behind nursing desk if no other recliner is available. Avoid the nursing desk/chair if possible. Be managed from the recliner unless checking BGL. Be able to walk from recliner behind desk to access diabetic draw.